

Project Profile

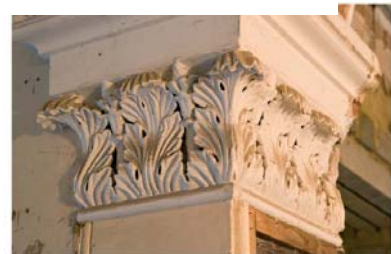
Bridge House, Sion Hill, Clifton

Client : **Park Properties**
Value : **£5.7 million**
Our Role: **Principal Contractor - Partnering Contract**

Sensitive restoration and refurbishment of Bridge House, a former Hotel, to create 18 luxury two and three bedroom apartments with 3 exclusive penthouses.

Originally built in 1865 Bridge House will retain many of the original room proportions and features which are being painstakingly restored to provide the apartments with a period elegance. The communal entrance, when restored, will feature a grand staircase with elaborate cast iron balustrade, stain glass windows and limestone flooring.

Progress Photographs



Large structural alterations will be undertaken to create a garage, lift shaft and wine cellar in the basement following the demolition of a redundant link block and plant room. All existing M&E will be replaced and state-of-the-art technology will be installed.

When complete, Bridge House, one of Bristol's finest and most historically important buildings will provide exclusive, high quality accommodation with fantastic views over the Avon Gorge, Clifton Suspension Bridge and Durdham Downs.

Contact Details



E R Hemmings (Building) Ltd • Dean Road • Yate • Bristol • BS37 5NR

Tel: 01454 884444 • Fax: 01454 884455 • www.erh.co.uk • Email: mail@erh.co.uk